



Jillaroo
www.jillaroo.com.au

INSTALLATION & INSTRUCTIONS

☐ W5600 ☐ W5600C Caravan Awning

W20210111EN

🌐 www.jillaroo.com.au
☎ 1800-726-679
✉ sales@jillaroo.com.au

CONTENTS

Package Components.....	P.4
Preparation.....	P.5
Installation.....	P.6-P.11
Open steps.....	P.12
Close steps.....	P.13-P.14
Maintenance.....	P.15

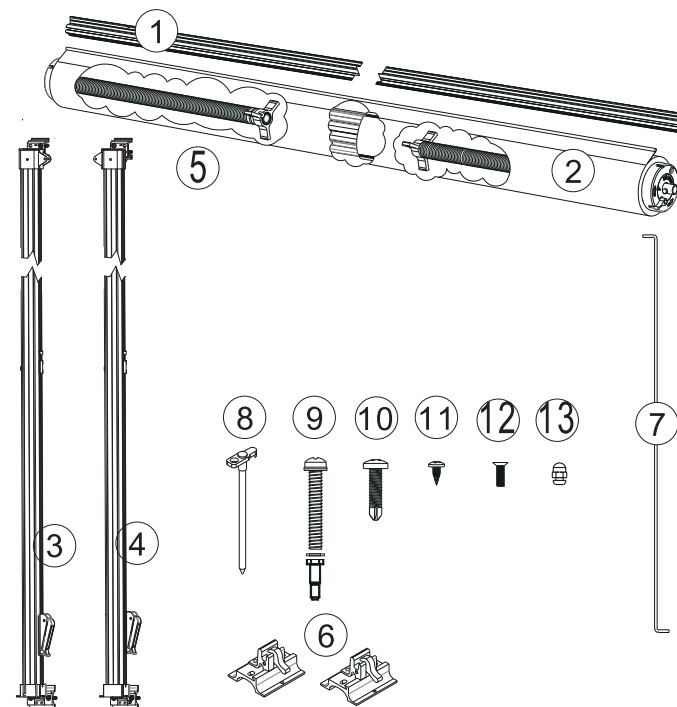
WARNING



Please read and ensure you understand this manual before install, adjust, service and maintain the awning. This awning must be installed and serviced by a competent person. Please be sure to take good care of this manual for daily maintenance!

Package Contents

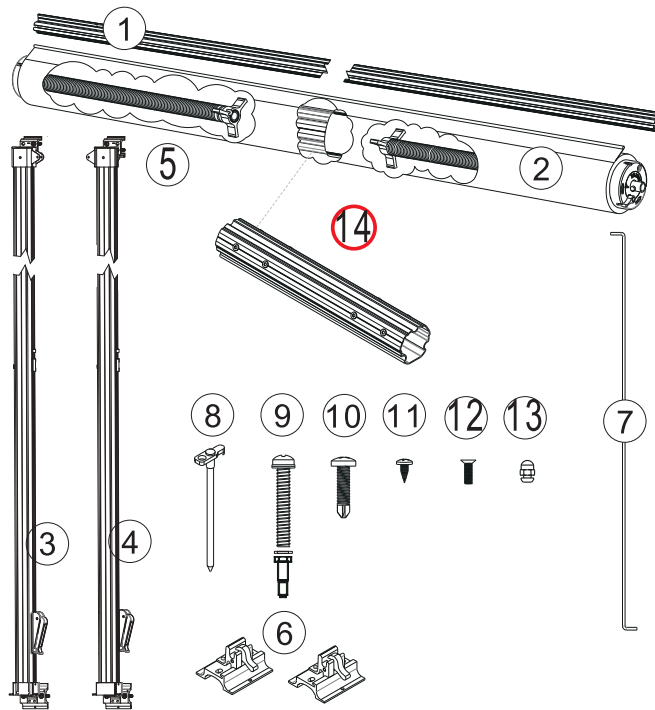
□ W5600



□	ITEM	DESCRIPTION
□	1	Fabric lock rail
□	2	Fabric roller
□	3	Left arm
□	4	Right arm
□	5	Upper bracket
□	6	Bottom bracket
□	7	Pull rod
□	8	Peg
□	9	M6x50 hex head screw
□	10	Φ4.1x35 Self-tapping screw
□	11	Φ4.1x13.5 Self-tapping screw
□	12	M6x16 screw
□	13	Set screw

Package Contents

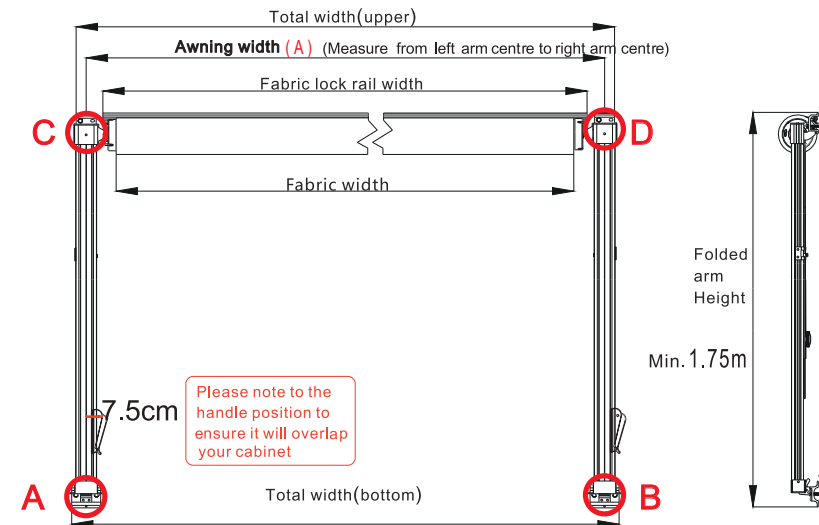
□ W5600C



□	ITEM	DESCRIPTION
□	1	Fabric lock rail
□	2	Fabric roller
□	3	Left arm
□	4	Right arm
□	5	Upper bracket
□	6	Bottom bracket
□	7	Pull rod
□	8	Peg
□	9	M6x50 hex head screw
□	10	Φ4.1x35 Self-tapping screw
□	11	Φ4.1x13.5 Self-tapping screw
□	12	M6x16 screw
□	13	Set screw
□	14	Fabric roller connector

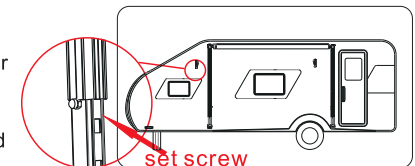
Preparation

1. Open the package and check all parts and accessories in the package contents. Ensure nothing is missing in the box.
2. Prepare the installation tools, like electric hand drill, hand pliers, measuring tape, screwdriver, mark pencil.
3. Please take a look below drawing, there are A.B.C.D points need to be fixed on your caravan, those A. B.C.D points defer in distance (height and width of each type are different) Please find it in the below measurement sheet of the type you bought. Then calculate and measure right installation points, mark it with mark pencil.



ATTENTION

Our awning min.folded arm height is 1.75m. If your caravan is higher, please extend the arm to suit for your caravan. Then lock the position with our set screw. If it is less the arms can be cut down to 1.45m by removing the top cap on arm and cutting to the required height.



Metric measurement

Measurement position sheet								Unit: m
Awning Width (A)	2.5	3.0	3.5	4.0	4.5	5.0	5.5	6.0
Total Width (upper)	A+0.08							
Fabric lock rail width	A-0.13							
Fabric Width	A-0.254							
Total Width (bottom)	A+0.105							
Folded arm Height	1.75							
Extension (max)	2.5							

Imperial system measurement

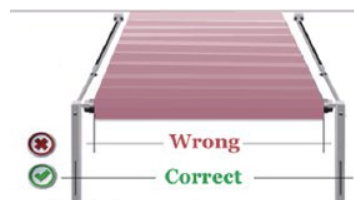
Measurement position sheet												Unit : ft / in			
Awning width(A)	8'	9'	10'	11'	12'	13'	14'	15'	16'	17'	18'	19'	20'	21'	
Total Width (Upper)	A+3.15"														
Fabric lock rail width	A-5.12"														
Fabric Width	A-10"														
Total Width (Bottom)	A+4.13"														
Folded arm height	68.90"														
Extension (Max.)	8'														

REMAKE:

A=represents awning width.

(Measure from left arm centre to right arm centre.)

Please check above measurement sheet carefully, and calculate the correct installation position accordingly.



Installation

step.1

Find out the awning brackets (2pcs bottom brackets + 2pcs upper brackets which already fixed on the arm) and two arms. see package content part⑤and⑥.

step.2

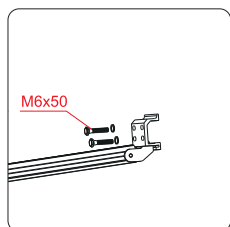
Drill the holes for fixings A.B.C three brackets , according to your marked positions. (You may double check the right distance of the upper and bottom brackets)

Note: Do not mount D bracket until last step.

ATTENTION

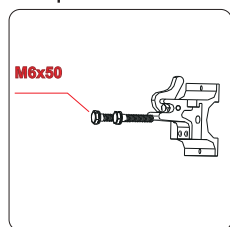
Please ensure all brackets positions are free stable and DO NOT overlap with other parts of the caravan side wall (Eg.Windows, doors or others).

Step.3



Fix the upper C brackets with M6x50 screws.

Step 4



Fix the A.B bottom brackets with M6x50 screws.

Do not fix D bracket to caravan

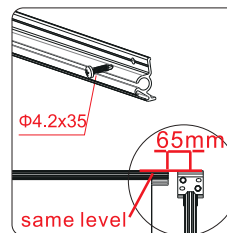


ATTENTION

Please Ensure the arms are vertical to the ground and parallel to each other !

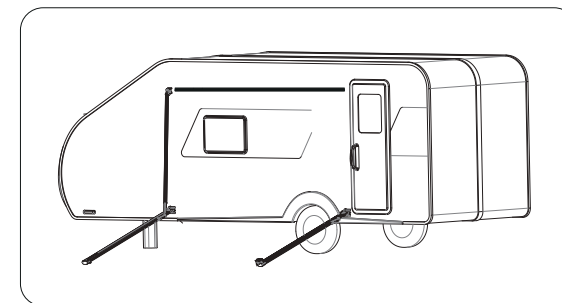
Step.5

Fix fabric lock rail



The fabric lock rail is between two upper brackets, but keep them in the same height position.

After you have completed above step, awning should look like below picture.



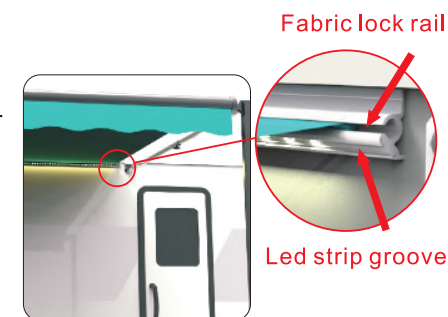
Optional Acc

– Led Strip

Install the LED strip

There is a groove for LED Strip which is under the fabric groove on the fabric lock rail. See pic You can slide your LED strip into it if you have one.

(But the LED strip is not included in our awning kit. If you need one, please kindly contact with our salesteam to order one it)

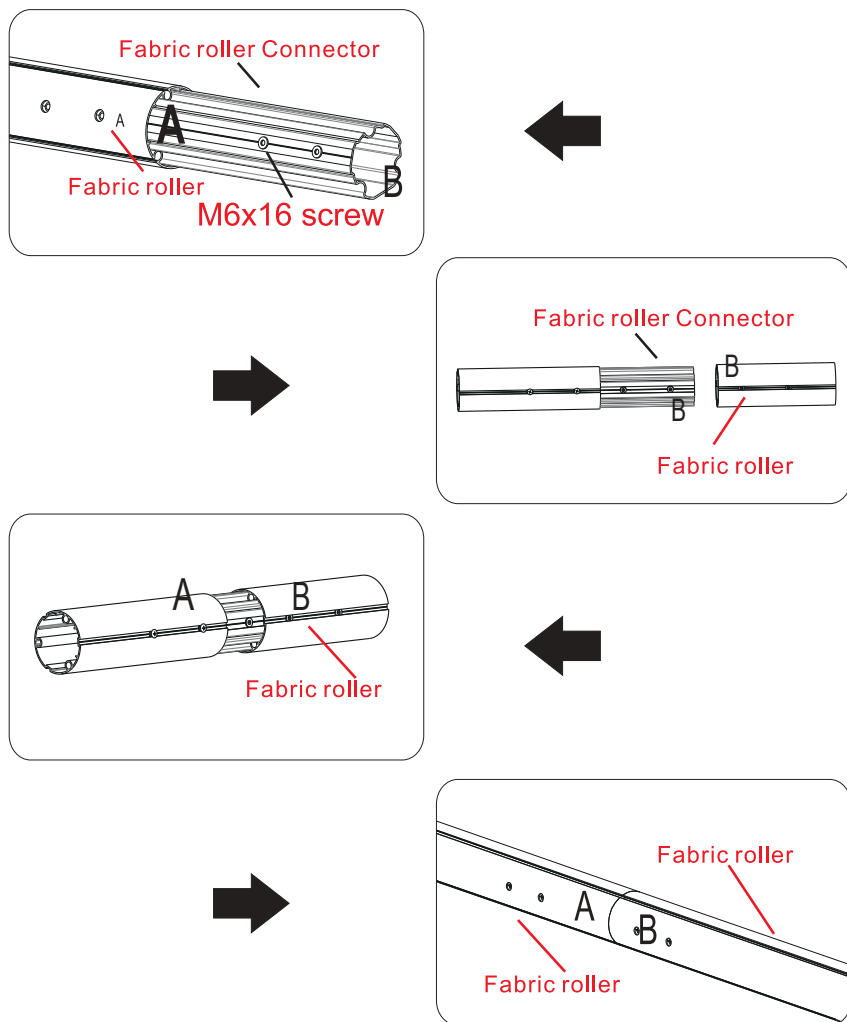


ATTENTION

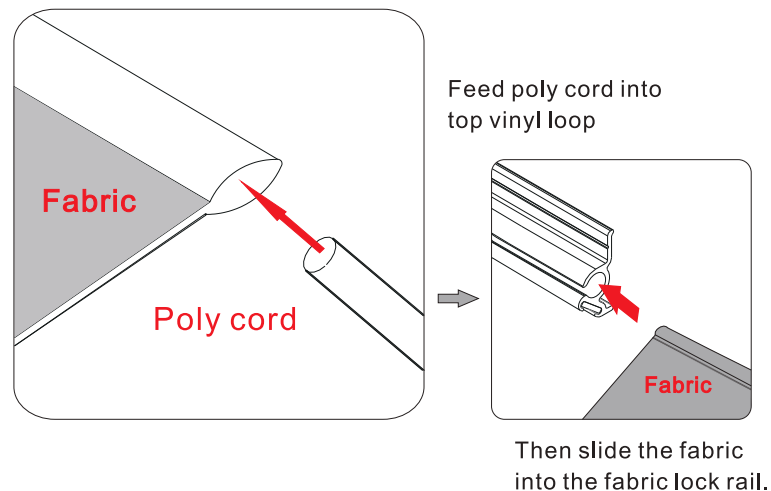
If you have a modular type (W5600C), please connect the fabric roller first.

Connect the fabric roller

Please take out the roller connector from the tube which is located in the left and right end caps, then connect the tube piece by piece. (Aligning the hole position then fix the M6 X 16 screws)

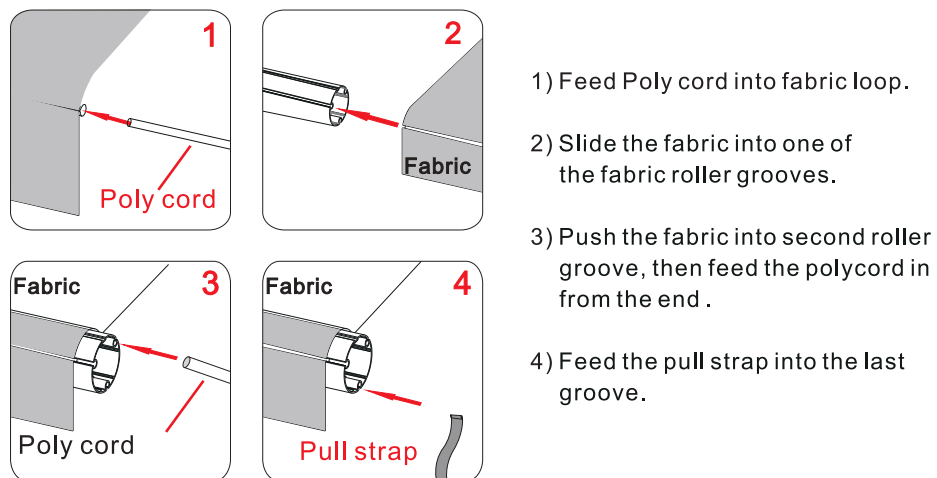


Step.6



Step.7

Put the fabric into fabric tube according to below steps.



ATTENTION

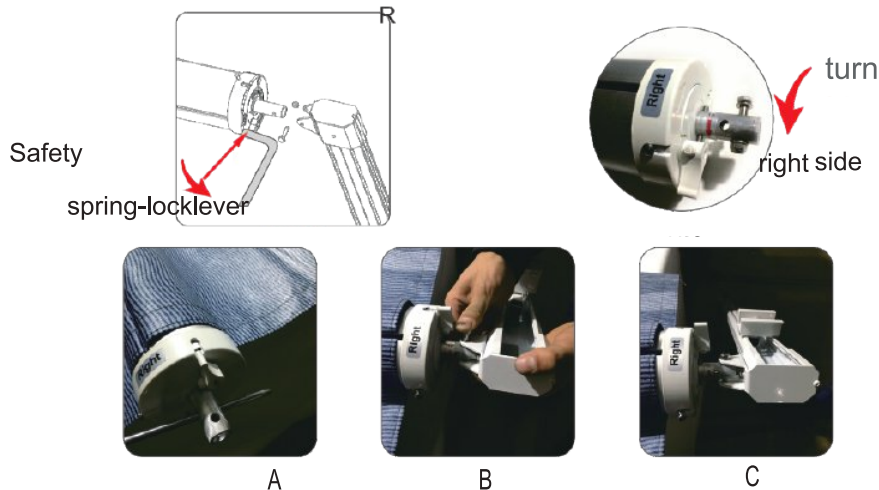
To tension Springs, awning must be in extended position

Connect the arms

Step.8

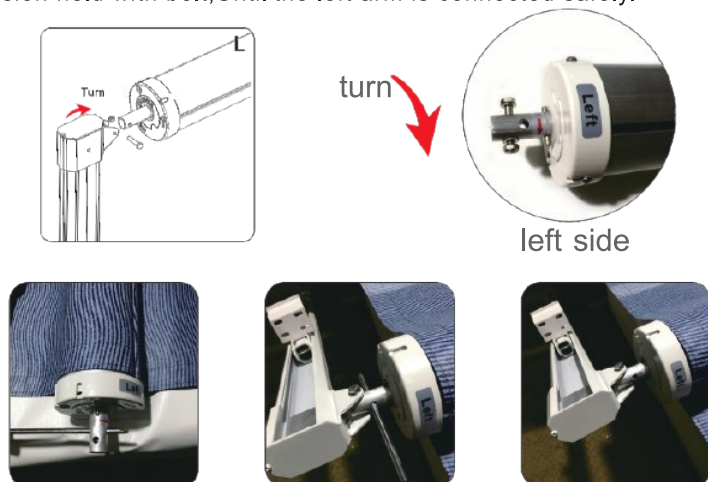
Connect the right arm

1. Turn down the Safety-spring lock according to the Picture showing direction (On and ONLY the RIGHT side of the fabric roller, there is a Safety-spring lock)
2. Tension right side spring by turning the spring end A with clamp/screw driver fully turn 13-15 turns according to picture marked direction.
3. Connect the roller with arm, see picture B



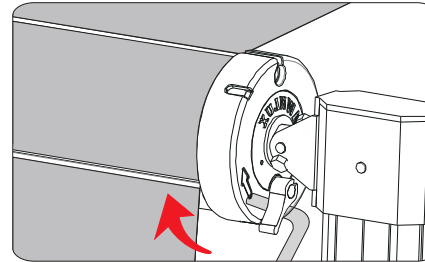
Connect the left arm

1. Tension Left side spring by turning the spring end with screw driver/clamp fully turn 13-15 turns according to picture marked direction
2. Keep tension held with bolt, Until the left arm is connected safely.



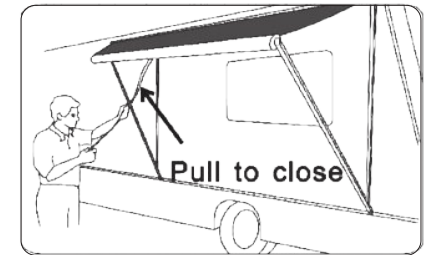
Step.9

Pulling slight tension on pull strap. Gently Turn up the safety-spring lock according the picture marked direction to fold up.



Step.10

Holding pull strap to guide fold up



Step.11

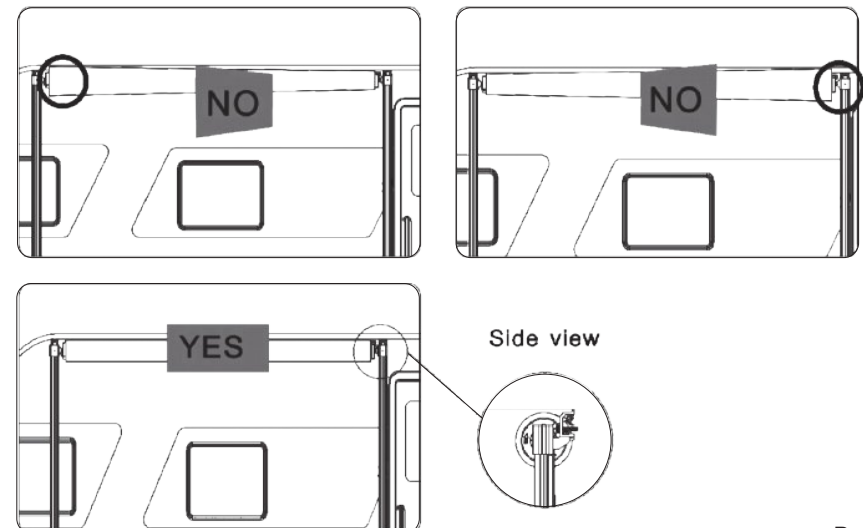
After rolling the awning up and checking the left arm is folded up correctly (allowing vinyl to slide through fabric lock rail) fix fabric through the fabric lock rail on each side (using part 11 self tapping screws) This will prevent the fabric from moving and keep the awning square. While in the fold up position

This will now allow you mark out and fix bracket D on the van.



By now, installation steps are done, please double check the awning and make sure the two side spring tensions are the same, and in a state of equilibrium.

ATTENTION

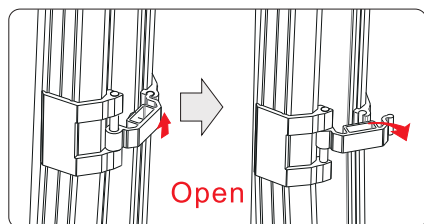


How to operate awning

Open steps

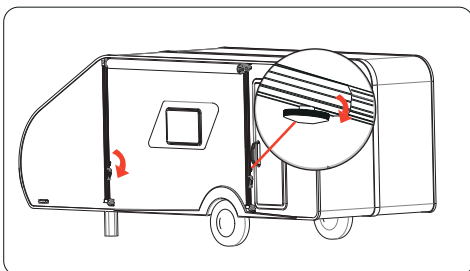
Step.1

Release the inner and outer arm-lock each side.



Step.3

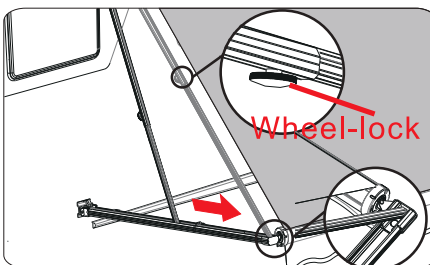
Open the wheel-lock of the inside arm.



Step.5

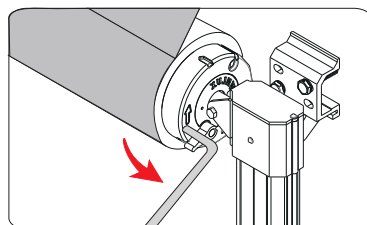
Move the arms to the end of the fabric roller into locking position.

Then tighten their wheel-locks each side.



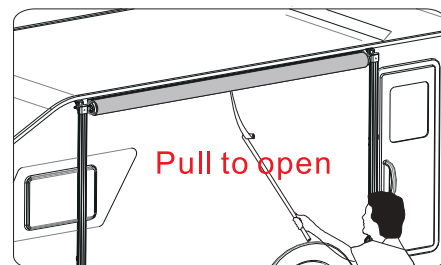
Step.2

Turn down the spring lock according the picture.marked direction.



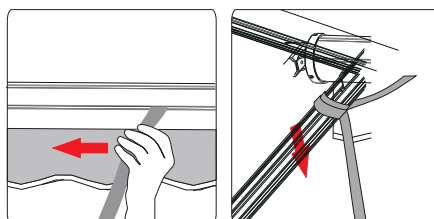
Step.4

Grab the pull strap with the pull rod. Now pull the construction open until fully extended.



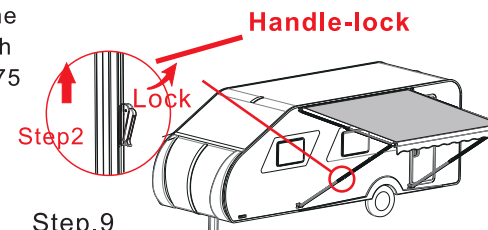
Step.6

Keep the pull strap nicely by pulling it on one end of the fabric-tube and wrap the strap around the arm.



Step.7

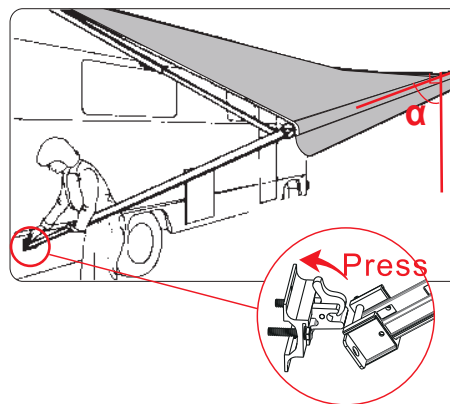
Now you can lift up the arm by opening the handle-lock on the outer arms and stretch them as long as you like (ranging from 1.75 to 2.87m).



Step.8

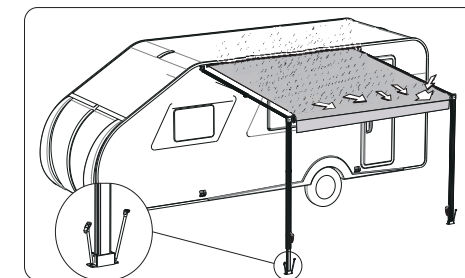
Release the outer arms from their bottom brackets by pushing the lever.

Take care that the construction doesn't be twist too much doing so. You may post the outer arms in a good 90 degree angle to the ground. Now adjust the necessary height and then fix the arms with their locks.



Step.9

Fix the bottom plates of the arms with the steel-peg. That way.

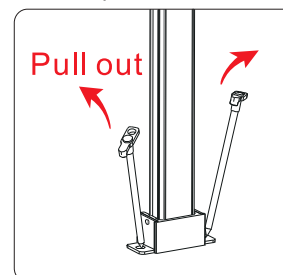


Outer arms / poles should be a little inclination of the fabric against the ground in order to let rain-water run down from the fabric !

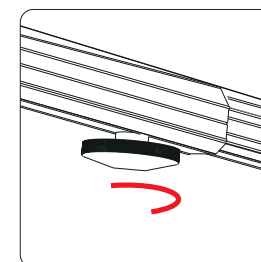
Close steps

Step.1

Pull out the pegs from the bottom-plate of the outer arms.



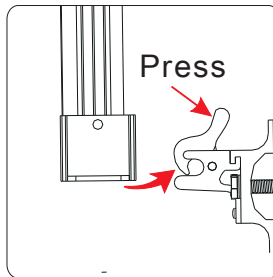
Step.2



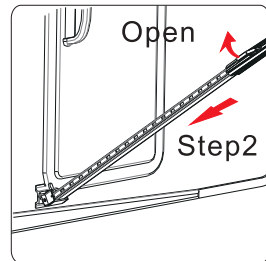
Close steps

Step.3

Lift up the outer arms and pull them back into their bottom-bracket on the caravan sidewall by opening the bottom-bracket-locks.



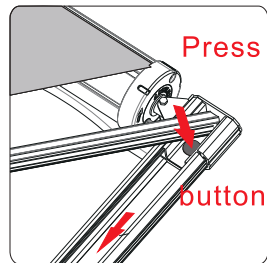
Step.4



Now open the handle-lock and slide the two arm of the outer arms into another, making sure not to twist too much doing so

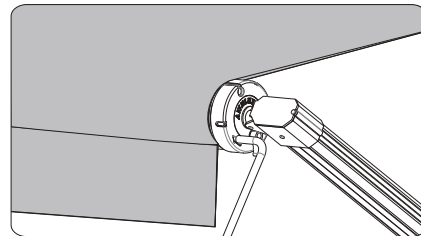
Step.5

Press the buttons inside the outer arms and now slide the inner sliding arm to the caravan.



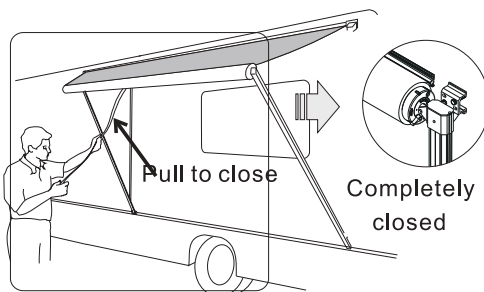
Step.6

Holding tension on pull strap
Turn up the safety spring lock according the pic marked direction.



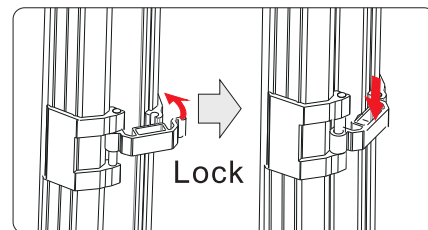
Step.7

Holding the pull strap and put it in the middle of the fabric roller guide the awning allowing to rolls itself up slowly.



Step.8

Close the inner and outer arm-lock each side.



Step 9

Tighten Wheel lock for travel

ATTENTION

Please make sure that all parts of the awnings are safely locked when you are not using it!

Awning care and maintenance care

Regularly check if the awning fasteners are kept tight, if not, please tighten all fasteners. And Periodically clean the awning fabric and arms.

How to clean fabric

Monthly flush off the awning fabric with clean water and thoroughly cleaning the fabric with soft brush and warm water every one or two years.

Please note

When you clean the fabric, only the natural soap and clean water. Never detergent, old based cleaners or any caustic, granulated or abrasive type cleaners.

Air-dry, Don't Roll up the awning until the fabric is dry thoroughly.

How to clean awning arms


Regularly wash out the arm channels with hose in case of dirt and debris cause that could the arm channels not to slide easily. It is better if you can lightly That could spray the inside of the channel with dry silicone lubricant.

Clean the arms periodically, This is the best way to keep the awning arms and braces operating smoothly.

After the arms have been cleaned and dried thoroughly, open the arm locks, then spray with dry lubricant to prevent binding and locking



 www.jillaroo.com.au

 1800-726-679

 sales@jillaroo.com.au